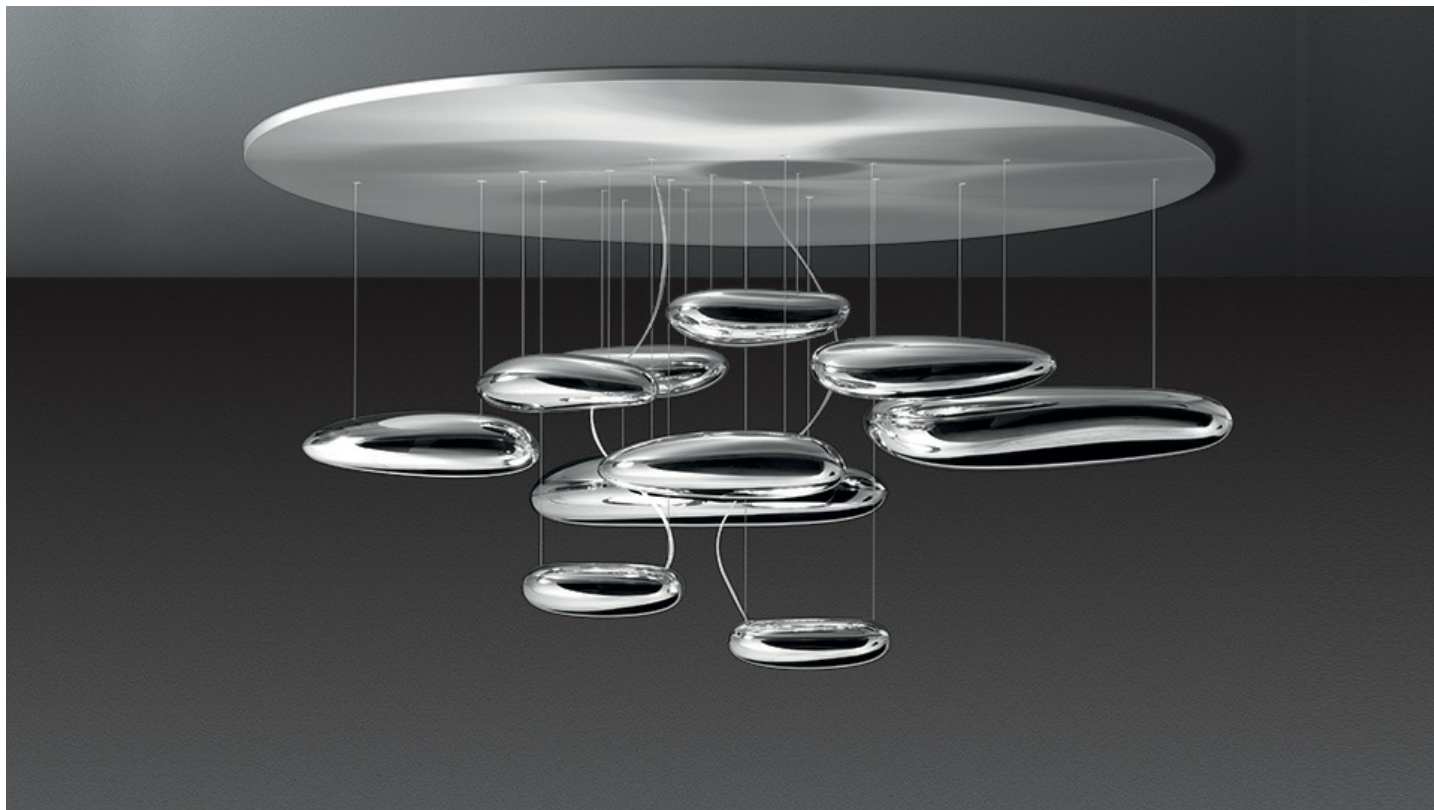


Mercury



Lamp available in the suspension and ceiling versions. "A ceiling fixture that places a floating assembly of large pebbles below a simple modern aluminium disc. These in turn reflect each other bouncing light between their taught bio - morphic surfaces and reflecting the environment around them. During the day the piece acts as a sculptural object reflecting the dynamics of natural light and the movement of people around them. Die-cast aluminium lighting units; reflective units made of injection-moulded thermoplastic material with metallic finish; die-cast aluminium reflector.

Metal Grey /
Mirror

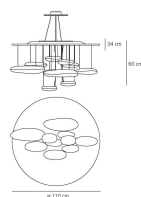


LED Suspension

© V PC E 960° IP20




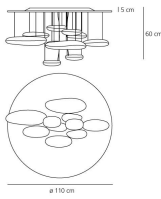
W	Dimensions	Luminous Flux (lm)	CCT	Color	Code	Product name
70W	H 55cm	4660lm	3000K	●	1367110A	Mercury Led Suspension - Inox



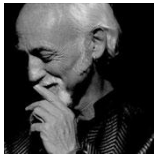
LED Ceiling



W	Dimensions	Luminous Flux (lm)	CCT	Color	Code	Product name
58W	H 55cm	6990lm	3000K		1366110A	Mercury Led Ceiling - Inox



Designers



› Ross Lovegrove

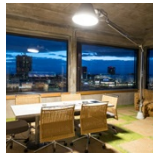
Projects



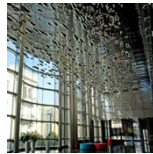
› Ramada Plaza



› J&T Headquarters



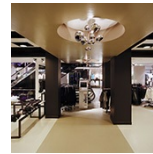
› Speicher 7



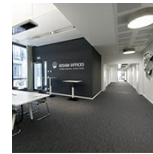
› National Theatre - Baku



› Biotherm



› New Yorker Flagship store



› Design Office



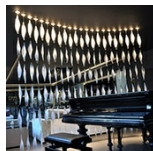
› CB Richard Ellis



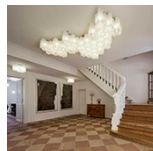
› HSBC



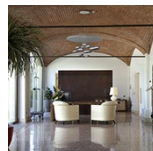
› Klima Hotel



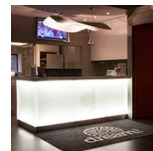
› Hotel Ambasciatori



› Schlössl Oberrotterbach



› The Ziba Hotel



› Dream Hotel